



Circular IT
group

We Make IT Circular!

Circular IT group

Jaarcongres CIRCULAIRE-IT
2024



Leendert van Houwelingen
Commercial Director Circular IT Group

About Me

“As a sustainable realist I am part of an innovative alliance revolutionizing the IT industry.”

We specialize in Circular IT solutions, extending IT asset lifespan and so minimizing environmental and social impact in a cost-effective way.”

We offer our comprehensive services and solutions to over 10,000 B2B customers globally and processing > 1.7M units annually and growing YoY.

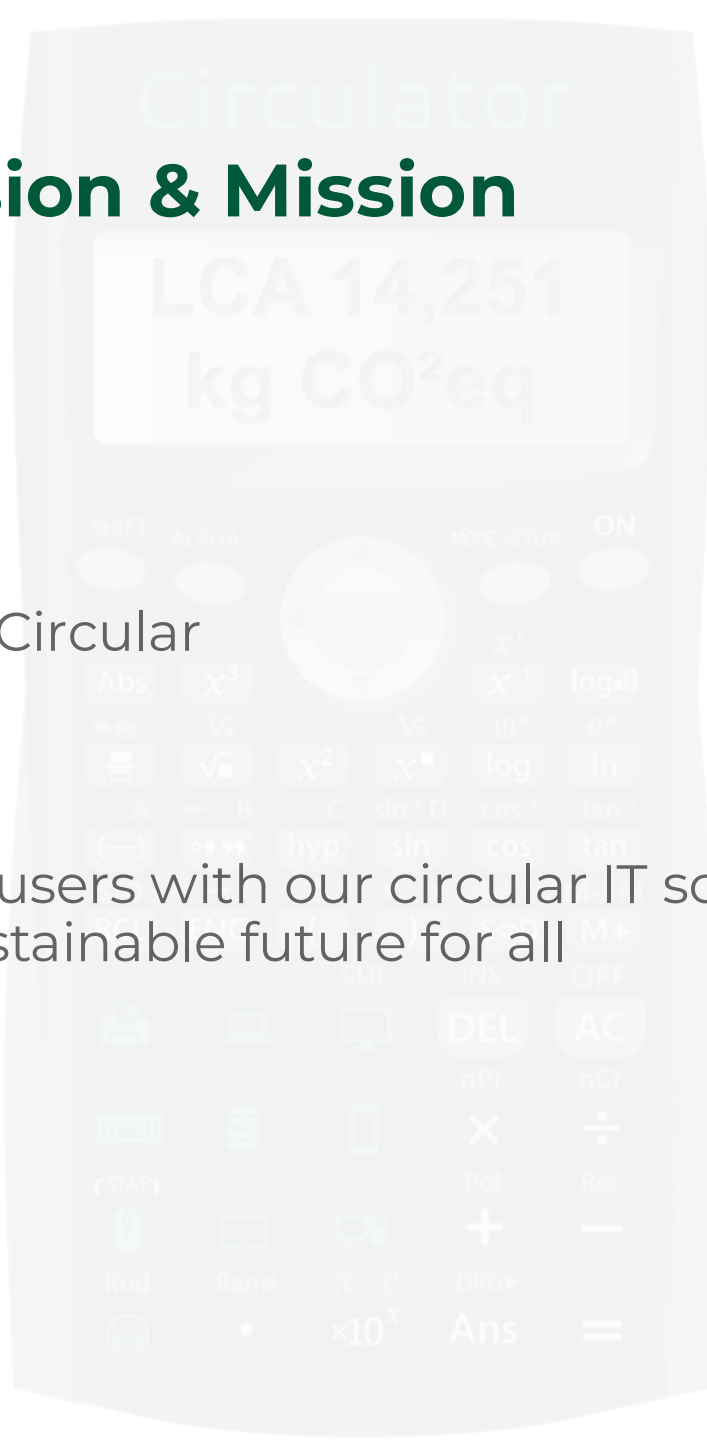
Our Vision & Mission

Vision

Making IT Circular

Mission

Empower users with our circular IT solutions driving a more sustainable future for all



Accelerate the Strategy by handshake

Calculate your impact

Vaak is het voordeliger om geen nieuwe IT hardware aan te schaffen kiezen. Dit kan veel CO₂ uitstoot, E-waste en energie besparen. Bekijk

1) Choose your laptop product

Brand > Model > Type

Product > Brand > Model >

+ Add device

2) Choose your preference

New Refurbished Extend the

3) Choose your service level

Self service DaaS Intended use life

4) Choose your baseline

Brand > Model > Type

40 Refurbished HP Latitudes 840 G9 in Ownership

Savings compared to New in Sale

Impact	45,6 Kg E-waste	202 Kg CO ₂ eq.	3392 KWh
Savings	- 80 Kg E-waste	- 100 Kg CO ₂ eq.	- 20 KWh

Your impact for 40 Refurbished HP Latitudes 840 G9 in Ownership

Impact over 4 years

45,6 Kg E-waste	202 Kg CO ₂ eq.	3392 KWh	70% Circular
--------------------	-------------------------------	-------------	-----------------

E-waste

Weight of product (kg)^[1] * (1-refurbish rates)^[2]
 Weighted end-of-life remanufacturing weight (kg)^[3,4,5]
 Weighted end-of-life recycling (kg)^[3,4,5]

= 1,14 kg * 40 devices = 45,6 kg E-waste

Emissions of CO₂ equivalents

Carbon footprint manufacturing
 Carbon footprint distribution
 Carbon footprint per kWh * annual energy use (kWh) of use location * use life (ys)
 Carbon footprint end-of-life
 Carbon footprint refurbishment - carbon footprint past life

= 5.05 kg CO₂ eq. * 40 devices = 202 kg CO₂ eq. GHG emissions

Energy consumption

Use life (ys)
 Typical energy consumption during use per year (kWh)¹ x

= 84,8 kWh * 40 devices = 3392 kWh

Circularity

Weight of product (kg)¹ - weighted recycled content(kg)
 Weight spare parts(kg)
 E-Waste per product(kg)

Total upstream and downstream mass
 2 * Weight of product (kg)¹

= Share of linear mass

Circularity = 100% * (1 - share of linear mass) = 70 %

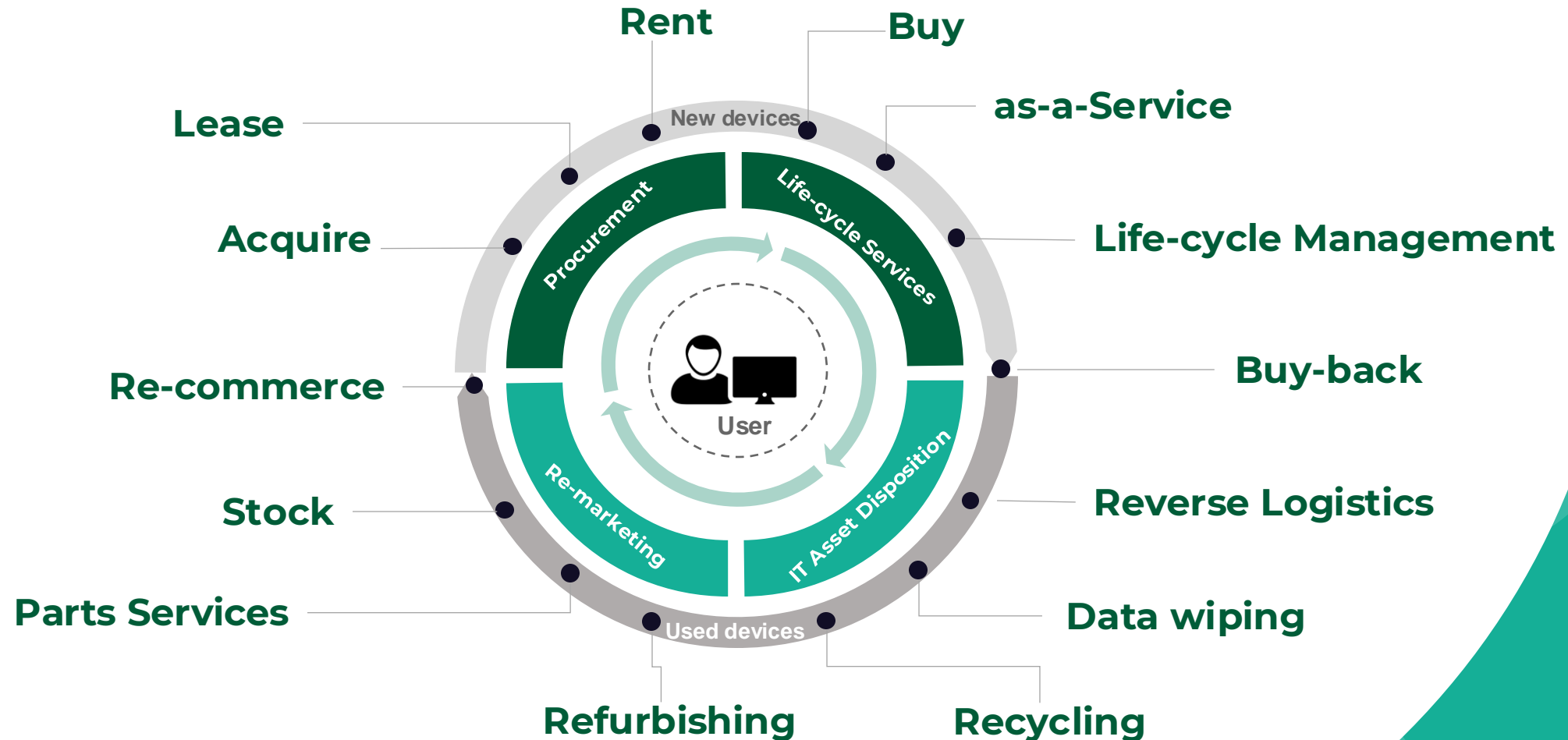
Sources

- EPD link product
- refurbish rates CTG
- Paper
- study on WEEE plastic
- Zuesenfeld.com

Request PDF

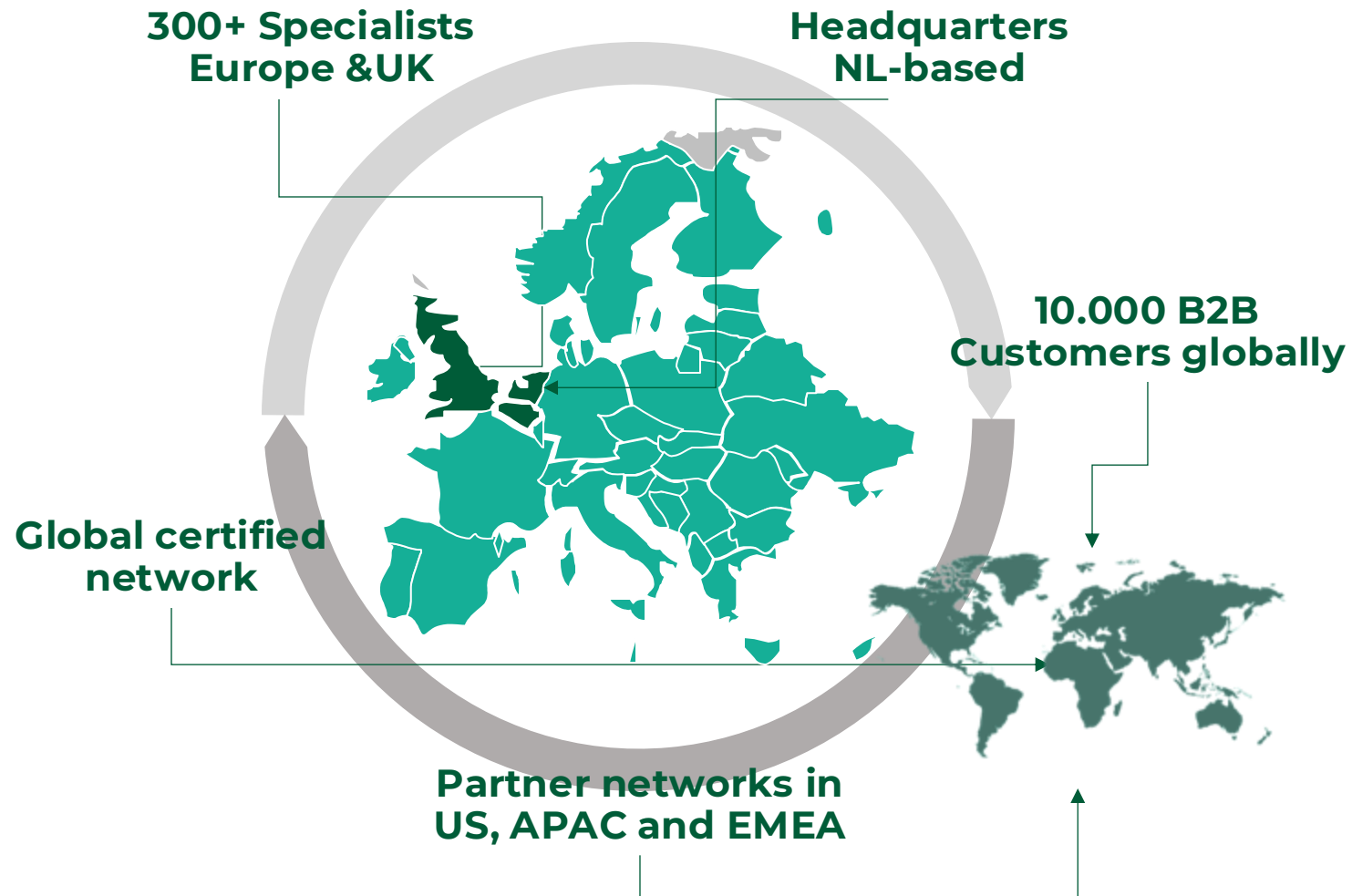
Our Strategy to deliver the promise

We have built a fully-circular IT life-cycle management platform

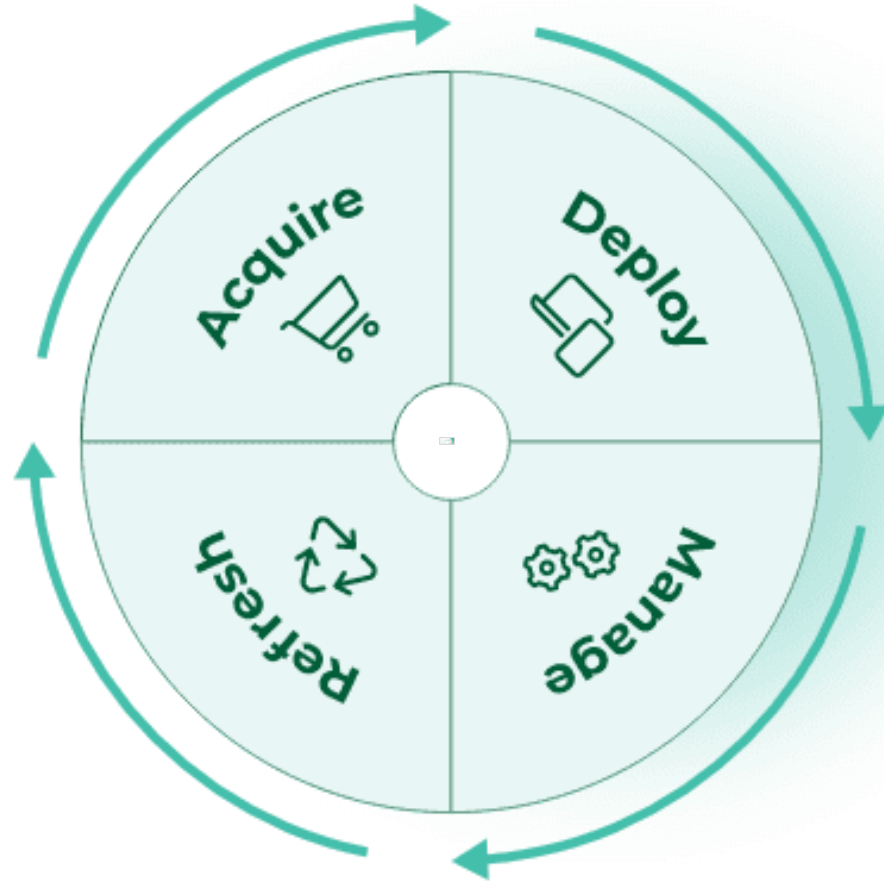




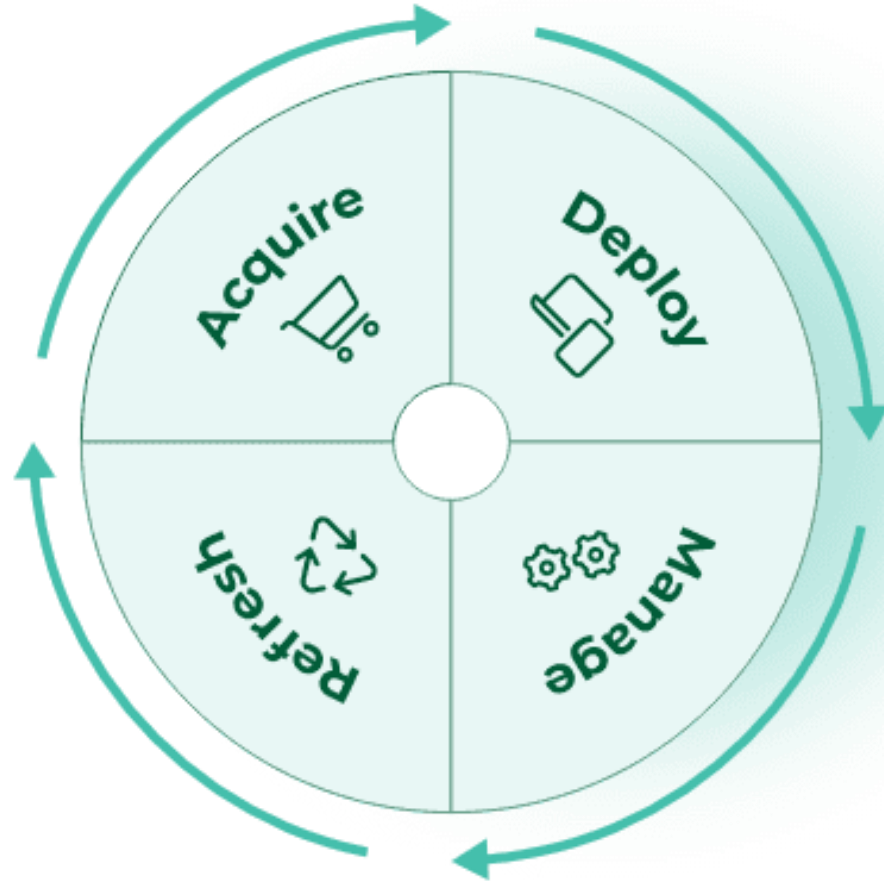
Make IT Circular anywhere



Circular ≠ New?



Circular = New



Circular workplace

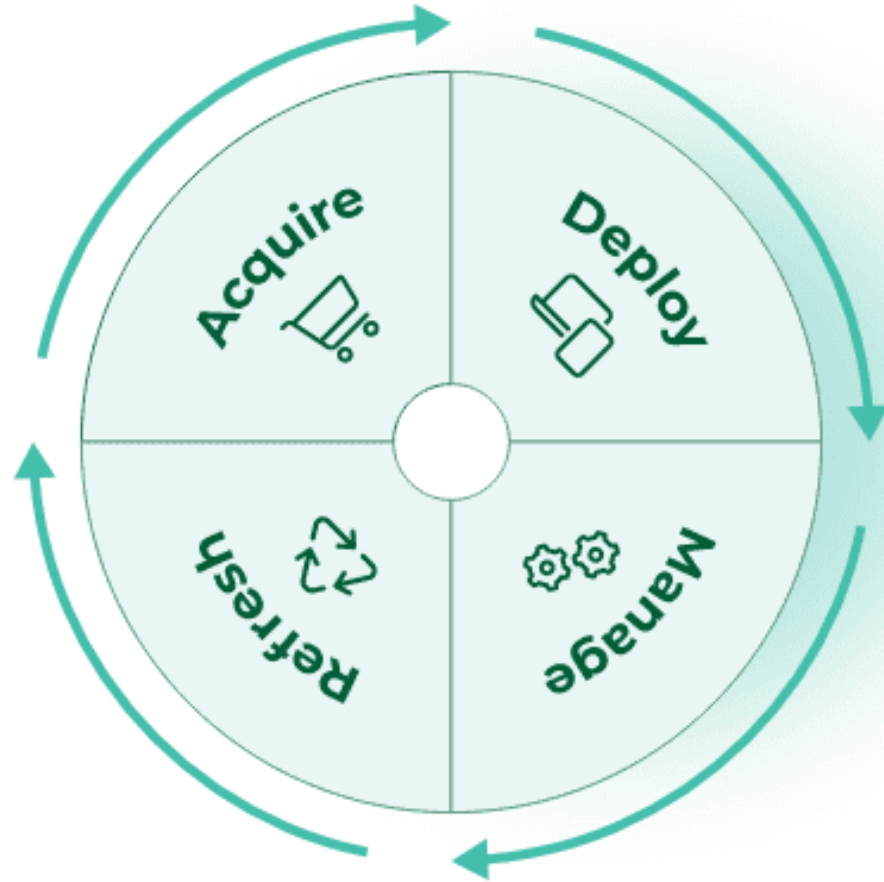
Warranty during 1st and 2nd live up to 8 years

Programmed Circular Lifecycle and ITAD at purchase

Safe, secure, compliant with total control

Enabling positive TCO!

Circular = New



Circular workplace

Warranty during 1st and 2nd live up to 8 years
Programmed Circular Lifecycle and ITAD at purchase
Safe, secure, compliant with total control

Enabling positive TCO

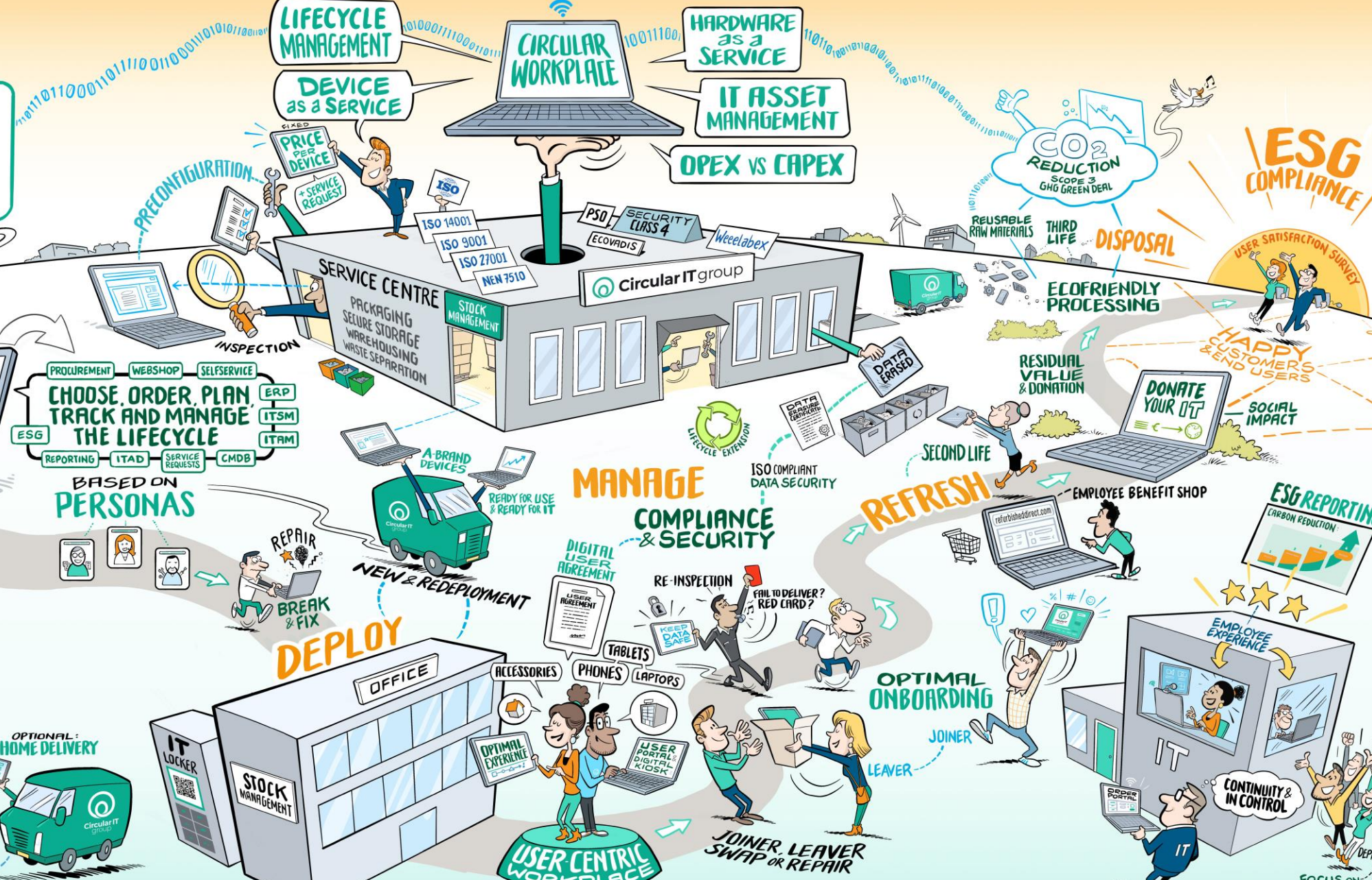
Circular+ workplace

Environment, Social and Governance edition

DEVICE LIFECYCLE MANAGEMENT FOR: SEAMLESS USER EXPERIENCES AND SMOOTH ITAM OPERATIONS

CIRCULAR WORKPLACE
LIFECYCLE MANAGEMENT
DEVICE as a SERVICE
HARDWARE as a SERVICE
IT ASSET MANAGEMENT
OPEX vs CAPEX

CO2 REDUCTION
 SCOPE 3 GHG GREEN DEAL
ESG COMPLIANCE



ACQUIRE

DEPLOY

REFRESH

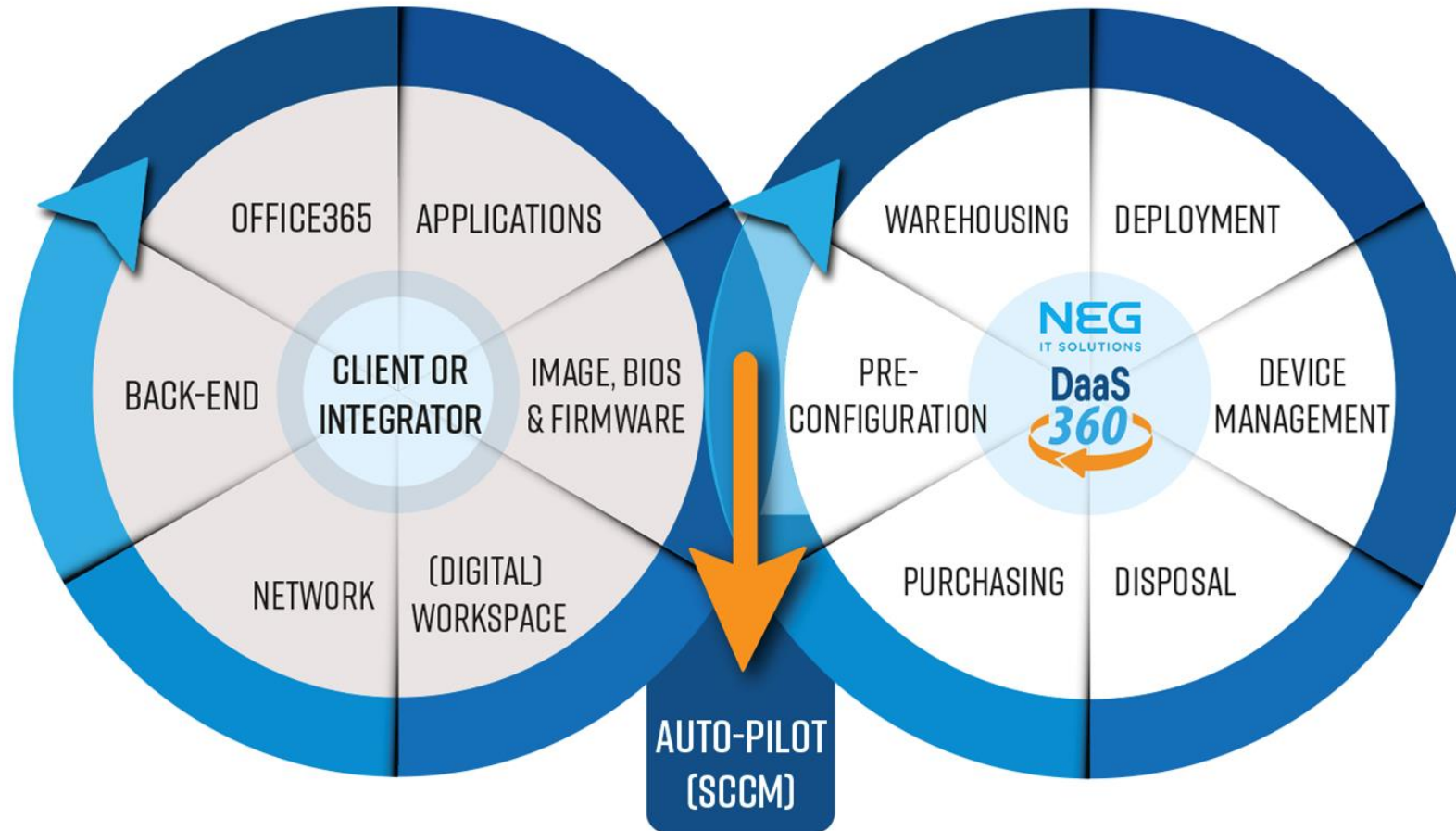
WE MAKE IT CIRCULAR



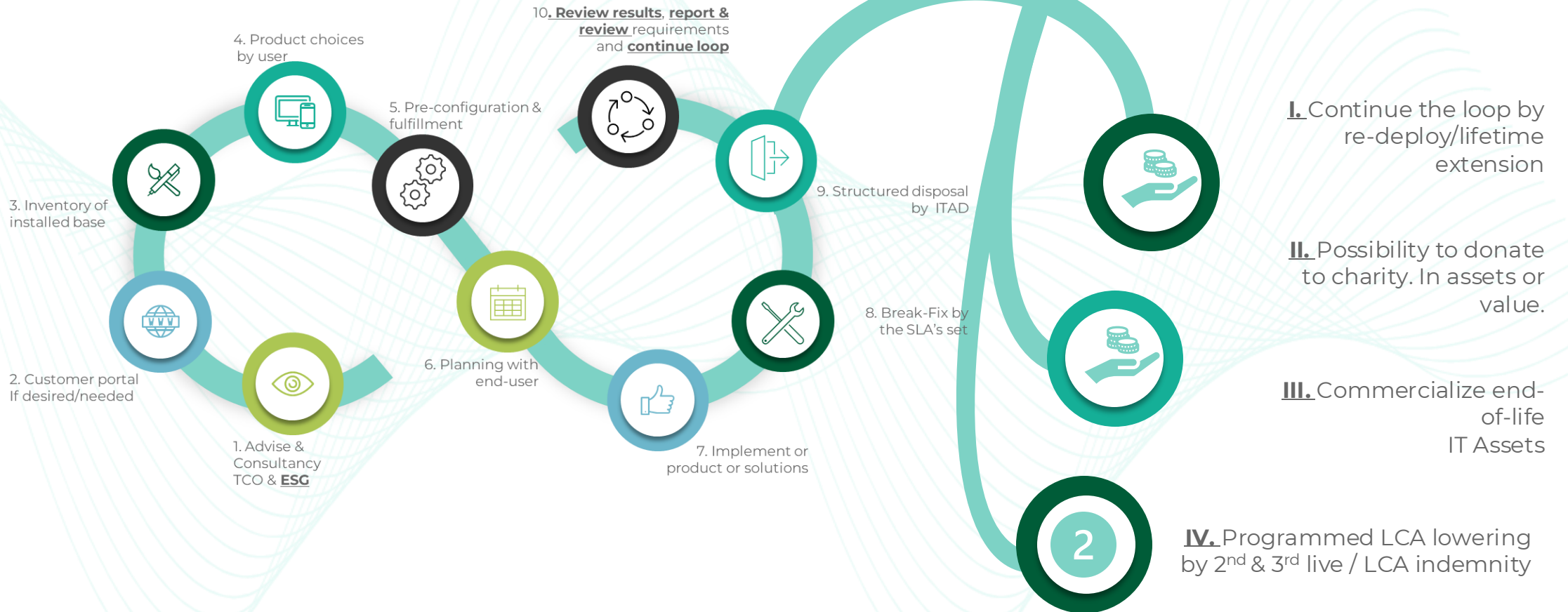
DEVICE **LIFECYCLE** MANAGEMENT

SOFTWARE MANAGEMENT

ENDUSER DEVICES



Opening 4 destinations for end-of-life IT Assets



Beyond the seat, a new portfolio

Circular
workplace

Circular+
workplace

Circular
IT infra

Circular+
IT infra

Circular
...

Circular+
...



Circular IT
group

We Make IT Circular!